



## Calendar Highlights

June 3	All Belgium Waffles Food Truck
Thursdays, June 4-25	Travelin' Tom's Coffee Truck
June 10	Benvenuti's Pizza Factory Food Truck
June 11	Rollies Fried Spring Rolls Food Truck
June 23	Tacos La Catedral Food Truck

## Fairway to Heaven

The wait is **over!** Our putting green at **Cherrington 300** is officially open for the summer. Located **next to the back patio**, it's the perfect place to **practice your putt**, challenge a coworker **on break**, or enjoy some sunshine.

## Food Truck Schedule

All kind of **new food options** are rolling into the park this month...

Wed. Jun 3	8 - 9:30A	All Belgium Waffles	Outside 500 Cherrington
	9:45 - 11:15A	All Belgium Waffles	Between 200/300 Cherrington
Thurs. Jun 4	8 - 11:30A	Travelin' Tom's Coffee	Varies by Building
Wed. Jun 10	11A - 2P	Benvenuti's Pizza Factory	Between 200/300 Cherrington
Thurs. Jun 11	8 - 11:30A	Travelin' Tom's Coffee	Varies by Building
	11A - 2P	Rollies Fried Spring Rolls	Between 200/300 Cherrington
Thurs. Jun 18	8 - 11:30A	Travelin' Tom's Coffee	Varies by Building
Thurs. Jun 25	8 - 11:30A	Travelin' Tom's Coffee	Varies by Building
Tues. Jun 23	11A - 2P	Tacos La Catedral	Between 200/300 Cherrington

View menus **HERE**; map of location on **page 3**.

## Blood Drive Results



May's blood drive was a **tremendous** success!

Thanks to the generosity of our donors, Vitalant collected **12** units of blood. That's enough to save up to **36** lives.

## Birthday Celebrations

Tenant employee birthdays are entered monthly for chance to win a gift card!

**BIRTHDAY MISSING?** *Please use link on last page to re-enter.*

June 2 - Russ Howells - KCI Technologies	CCC 500
June 10 - Zachary Zernick - ms consultants	CCC 300
June 12 - Brian Baldwin - Atkore	CCC 200
June 13 - Megan Johnston - Civil & Environmental Consultants	CCC 700
June 13 - Angela Cross - Civil & Environmental Consultants	CCC 700
June 23 - Ankita Sinha - Center for Digestive Health and Nutrition	CCC 500
June 23 - Stacey Asfalk - Civil & Environmental Consultants	CCC 700
June 27 - Brent Luzik - SSAB	CCC 300

**CBRE WILL CONTACT WINNERS WITH THEIR PRIZE**

## We're All Ears!

**TELL US** what you're **enjoying** (*or not so much*) about our events, amenities, and everything in between. Your feedback helps us make Cherrington Corporate Center a more enjoyable and connected office environment for everyone!

# Property Map

## MAP LEGEND

- |                   |                  |                         |                       |
|-------------------|------------------|-------------------------|-----------------------|
| <b>BLDG. 200</b>  | <b>BLDG. 300</b> | <b>BLDG. 400</b>        | <b>BLDG. 500</b>      |
| <b>BLDG. 600</b>  | <b>BLDG. 625</b> | <b>BLDG. 700</b>        | <b>WALKING TRAILS</b> |
| Amenity Center    | Birdhouse        | Designated Smoking Area | Fitness Center        |
| Management Office | Patio Seating    | Pollinator Garden       | Putting Green         |
| FedEx Dropbox     | UPS Dropbox      | USPS Dropbox            |                       |



Have you seen our newest neighborhood residents yet?

Behind Cherrington 600 and 700, our much loved pollinator garden is buzzing with life.

This spring we added **seven birdhouses** along the walking trails throughout the property! Now we're on the lookout for feathered tenants...



**SHARE YOUR PHOTOS WITH US!**

# Amenities at Cherrington Corporate Center



## TENANT AMENITY CENTER

📍 300 Corporate Center Drive      ⌚ AVAILABLE Monday - Friday from 8:00A - 6:00P ONLY

① Our conference and training spaces on the ground floor of 300 Cherrington feature Wi-Fi, smart TVs (including Apple TV), projectors, a Polycom phone, collaborative whiteboard walls, and more.

📞 To reserve a room, visit [www.cbrentenantrequests.com](http://www.cbrentenantrequests.com) or call 412-921-8500.



## TENANT FITNESS CENTER

📍 300 Corporate Center Drive      ⌚ OPEN Monday - Friday from 6:00A - 6:00P

① Our fitness area offers treadmills, weights, stretching space, and tension relief tools, along with showers, lockers, and a water station for refreshment.

🔒 To gain access, submit required paperwork with photo ID. Allow 24-48 hours for either an access card to be delivered to your suite or for your existing card to activate at the fitness center.

# Notes from Management

## CBRE TENANT REQUEST PORTAL

Our property utilizes an online work order system at [www.cbrentenantrequests.com](http://www.cbrentenantrequests.com). The tenant services portal provides a user-friendly system that ensures service requests are received, processed, addressed timely, and enables tracking of requests to completion. Use of the portal will help management address your requests efficiently. We strongly encourage use of this system to place non-emergency requests.

## DESIGNATED SMOKING AREAS

All building entrances are NON-SMOKING! SMOKING *INSIDE* THE BUILDING IS STRICTLY PROHIBITED *including* use of any electronic devices. There are Designated Smoking Areas outside each building. Smoking is not permitted anywhere other than this location. Please dispose of your cigarette butts in the proper receptacles to eliminate potential fire risks, litter and added cleaning expense.

## RECYCLING

OUR PROPERTY OFFERS A PROGRAM THAT ACCEPTS: PLASTIC BOTTLES AND CONTAINERS, FOOD AND BEVERAGE CANS, PAPER, AND FLATTENED CARDBOARD.

*It is required that all tenants break down any cardboard prior to disposal.* The janitorial staff has been instructed to not dispose of boxes that have not been broken down. Thank you for your cooperation.

## DELIVERIES

All major moves need to be scheduled with our office after 5:30pm during the week and anytime Saturday and Sunday. Please contact the Management Office prior to any large delivery. Please also remind daily delivery drivers to use loading zones for any deliveries.

## NOTARY SERVICES

Notary services are available and offered at no expense for our tenants. Please contact Carmen Bochicchio for more information.

## LINKS

[Food Truck Menus & Schedule](#)

[Tenant Birthday Celebrations](#)

[Feedback](#)

[Share Photos](#)

[CBRE Portal](#)

[Gym Access](#)

[Schedule Notary](#)

[Instagram](#)

[Facebook](#)

## CBRE Management Team



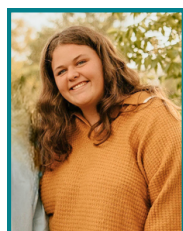
**Carmen R. Bochicchio**  
General Manager  
[carmen.bochicchio@cbre.com](mailto:carmen.bochicchio@cbre.com)



**Nicole E. Pilarski**  
Senior Financial Analyst  
[nicole.pilarski@cbre.com](mailto:nicole.pilarski@cbre.com)



**Robert J. Klimczyk**  
Chief Engineer  
[robert.klimczyk@cbre.com](mailto:robert.klimczyk@cbre.com)



**Brittany Zahn**  
Real Estate Services Coordinator  
[brittany.zahn@cbre.com](mailto:brittany.zahn@cbre.com)



**Brooke Malloy**  
Marketing and Events Coordinator  
[brooke.malloy@cbre.com](mailto:brooke.malloy@cbre.com)