

Newsletter



A Look Ahead

- FEBRUARY 2: GROUNDHOG DAY
- FEB. 12 - 16: SPOT CUPID!
- FEBRUARY 14: VALENTINE'S DAY
- FEBRUARY 19: PRESIDENTS' DAY
- FEBRUARY 29: LEAP DAY



Spot Cupid

WEEK OF FEBRUARY 12 - 16

FIRST PERSON EACH DAY THIS WEEK TO SEND A PHOTO OF CUPID TO BROOKE.MALLOY@CBRE.COM WILL RECEIVE A NEW COFFEE MUG FULL OF CHOCOLATE GOODIES!



Tenant "Suite" Treats



TENANTS WILL BE CHOSEN AT RANDOM TO RECEIVE "SUITE" TREATS LIKE COOKIES, BAGELS, DONUTS, & MORE DELIVERED TO THEIR DOOR ALL MONTH LONG ON BEHALF OF CBRE.

BE ON THE LOOKOUT FOR OUR "SUITE" SURPRISE!



All major moves need to be pre-scheduled with Management for after 5:30PM during the week and anytime Saturday and Sunday.

When a delivery to your office is received on a pallet(s), the pallet(s) must be removed by the vendor. Note: Pallets are not normal building waste and should not be put in the dumpsters. Your delivery personnel must remove and dispose of the material off site.

Please remind daily delivery drivers to use loading zones for any deliveries.

Groundhog Predictions



FOLLOW US ON INSTAGRAM!

@cherrington_corporatecenter

WE ASKED OUR INSTAGRAM FOLLOWERS TO PREDICT PUNXSUTAWNEY PHIL'S FORECAST FOR THE NEXT 6 WEEKS...

FINGERS CROSSED FOR AN EARLY SPRING DESPITE OUR RESULTS!



**60%
SHADOW**

**40%
NO SHADOW**



Tenant Birthday Celebration

THE FOLLOWING PEOPLE HAVE SUBMITTED THEIR BIRTHDAYS FOR THIS MONTH...

FEBRUARY 1 | MARINA HASANOV W. SSAB

FEBRUARY 3 | MCKENZIE NUGENT W. MS CONSULTANTS

FEBRUARY 7 | ERIANA GOOSBY W. DERMATOLOGY ASSOCIATES

FEBRUARY 8 | MARTY HOOVER W. KCI TECHNOLOGIES, INC.

FEBRUARY 20 | TIM KANENGISER W. CEC

FEBRUARY 22 | JESSICA VICTOR W. ATKORE

FEBRUARY 22 | LAUREN TERPAK W. MS CONSULTANTS

FEBRUARY 28 | LAURA JERNEGAN W. ATKORE INC.

WINNERS ARE HIGHLIGHTED & MUST CLAIM CARD IN PERSON

**YOU MUST (RE)SUBMIT BIRTHDAY FOR 2024 DRAWING
~ LINK TO ENTER ON LAST PAGE ~**

Need a Place to Stay?

CONTACT EITHER OF THESE LOCAL HOTELS & TELL THEM YOU ARE A CHERRINGTON CORPORATE CENTER TENANT TO RECIEVE OUR CORPORATE DISCOUNT!

COURTYARD BY MARRIOTT

450 Cherrington Pkwy

NICOLE ADAMSKI

SALES MANAGER

412-264-5000

www.courtyard.com

SHERATON PITTSBURGH

1160 Thorn Run Rd.

MARY JO GERMAINE

SALES MANAGER

412-375-5151

sheraton.marriott.com



BOTH LESS THAN 5 MINUTES FROM CHERRINGTON!

Tenant Amenity Center

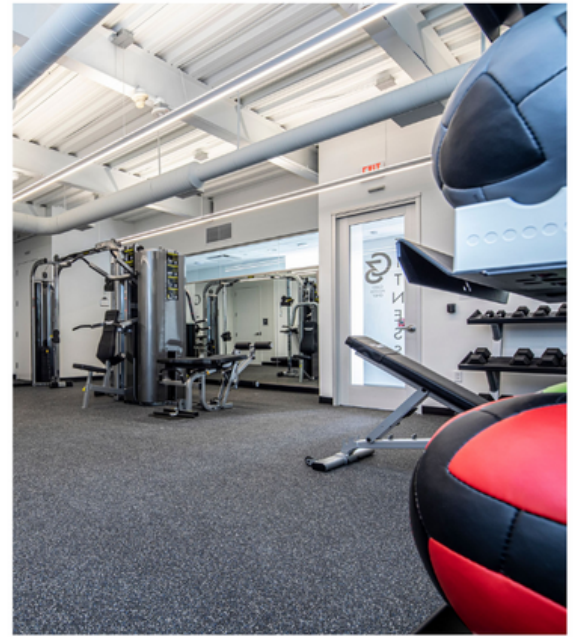
📍 1ST FLOOR BUILDING 300

📅 MONDAY - FRIDAY

🕒 6AM - 7PM

FEATURING A FULLY STOCKED SELF-SERVE MARKET, PATIO, AND INDIVIDUAL WORKSTATIONS, ALONG WITH AFFORDABLE CONFERENCE & TRAINING ROOMS ALL EQUIPPED WITH WIFI, PROJECTOR OR SMART TV & WIRELESS DISPLAY, WHITEBOARD WALLS FOR COLLABORATION, & PLENTY OF COMFY SEATING...

CONTACT MANAGEMENT FOR A TOUR!



WORK STATIONS



PATIO



CONFERENCE ROOM



TENANT LOUNGE

MARKET C

WHEN HUNGER STRIKES, HAVE NO FEAR!

MARKET C HAS GOT YOUR BACK WITH A RANGE OF OPTIONS FOR A QUICK BITE, REFRESHING DRINKS, OR FILLING LUNCH!



Virtual Suggestion Box

HAVE AN IDEA YOU'D LIKE TO SHARE?
NOTICED SOMETHING WE COULD DO BETTER?

YOUR FEEDBACK MATTERS TO US!

Consider scanning the QR code or clicking the link on last page & submit to our virtual suggestion box.



Notes from Management

MAINTENANCE REQUESTS ✈

CHERRINGTON CORPORATE CENTER UTILIZES AN ONLINE WORK ORDER SYSTEM. CBRE TENANT SERVICES PORTAL PROVIDES A USER-FRIENDLY SYSTEM THAT ENSURES YOUR SERVICE REQUEST IS RECEIVED, PROCESSED, ADDRESSED TIMELY, & ENABLES TRACKING OF YOUR REQUEST TO ITS COMPLETION. YOUR USE THE PORTAL WILL ALSO HELP US ADDRESS YOUR REQUESTS MORE EFFICIENTLY. WE STRONGLY ENCOURAGE USE OF THIS SYSTEM TO PLACE NON-EMERGENCY REQUESTS. WWW.CBREtenantREQUESTS.COM

DESIGNATED SMOKING AREAS 🚭

PLEASE BE REMINDED THAT ALL BUILDING ENTRANCES ARE NON-SMOKING! SMOKING INSIDE THE BUILDING IS STRICTLY PROHIBITED, INCLUDING THE USE OF ANY ELECTRONIC DEVICES. THERE ARE DESIGNATED SMOKING AREAS AT EACH BUILDING. SMOKING IS NOT PERMITTED ANYWHERE OTHER THAN THIS LOCATION. PLEASE DISPOSE OF YOUR CIGARETTE BUTTS IN THE PROPER RECEPTACLES TO ELIMINATE POTENTIAL FIRE RISKS, LITTER & ADDED CLEANING EXPENSE.

RECYCLING ♻

CHERRINGTON OFFERS A RECYCLING PROGRAM THAT ACCEPTS THE FOLLOWING ITEMS: PLASTIC BOTTLES & CONTAINERS, FOOD & BEVERAGE CANS, PAPER, & FLATTENED CARDBOARD. IT IS REQUIRED THAT ALL TENANTS BREAK DOWN ANY CARDBOARD BOXES PRIOR TO DISPOSING. THE JANITORIAL STAFF HAS BEEN INSTRUCTED TO NOT DISPOSE OF BOXES THAT HAVE NOT BEEN BROKEN DOWN. THANK YOU FOR YOUR COOPERATION.

DELIVERIES 📦

ALL MAJOR MOVES NEED TO BE SCHEDULED WITH OUR OFFICE AFTER 5:30PM DURING THE WEEK & ANYTIME SATURDAY & SUNDAY. PLEASE CONTACT THE MANAGEMENT OFFICE PRIOR TO ANY LARGE DELIVERY. PLEASE ALSO REMIND DAILY DELIVERY DRIVERS TO USE LOADING ZONES FOR ANY DELIVERIES.

NOTARY SERVICES 📄

NOTARY SERVICES ARE AVAILABLE & OFFERED AT NO EXPENSE FOR OUR TENANTS. PLEASE CONTACT CARMEN BOGHICCHIO AT 412-921-8500 OR CARMEN.BOGHICCHIO@CBRE.COM FOR MORE INFORMATION.

LINKS

1. SPOT CUPID
(BROOKE.MALLOY@CBRE.COM)

2. [CHERRINGTON BIRTHDAYS](#)

3. [INSTAGRAM](#)

4. [COURTYARD MARRIOTT](#)

5. [SHERATON](#)

6. TENANT AMENITIES TOUR
(BROOKE.MALLOY@CBRE.COM)

7. [TENANT PORTAL](#)

8. [SUGGESTION BOX](#)

CBRE Management Team



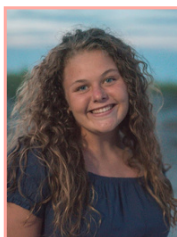
Carmen R. Bochicchio
General Manager
412.921.8500
carmen.bochicchio@cbre.com



Nicole E. Pilarski
Senior Financial Analyst
412.921.8500
nicole.pilarski@cbre.com



Robert J. Klimczyk
Chief Engineer
412.921.8500
robert.klimczyk@cbre.com



Brittany Zahn
Real Estate Services Coordinator
412.921.8500
brittany.zahn@cbre.com



Brooke Malloy
Meeting & Events Coordinator
412.921.8500
brooke.malloy@cbre.com



CLICK HERE TO SIGNUP FOR OUR MONTHLY NEWSLETTER!