

Newsletter



A Look Ahead

- AUGUST 3 - NATIONAL WATERMELON DAY
- AUGUST 10 - FOOD TRUCKS
- AUGUST 13 - INTRO TO TENNIS
- AUGUST 17 - ROBIN HILL LUNGTIME CONCERT
- AUGUST 19 - MOVIES IN THE MOONLIGHT
- AUGUST 20 - PITTSBURGH RENAISSANCE FESTIVAL
- AUGUST 24 - FOOD TRUCKS

Neighborhood Events

**MORE INFO IN LINKS SECTION,
PAGE 5.**

Management has partnered with Family Food Truckin' to host 2 of their food trucks during Moon Market:

MENUS FOR AUGUST 10:



MOBILE CHEF ISLAND BOARDWALK

- Jamaican Jerk Chicken Rice Bowl
- Puerto Rican Pork Tacos
- Belizean Shrimp Tacos
- Caribbean Coconut Curry Rice Bowl
- Island Fries *
- Island Nachos *
- *Choose Pork, Jerk Chicken, Shrimp, or Plantains
- Tres Leches Cake

TRUCKIN' TRIANGLES

- Cheese Steak Triangle
- Spicy Chicken Triangle
- Pizza Triangle
- Crab Rangoon Triangle
- Mac & Cheese Bites
- Meatball Triangle
- All Meals Come W. Fresh Cut Fries
- Salted Caramel Apple Triangle
- White Chocolate Cherry Triangle

**August 24
menu will
be sent
week of!**

AUGUST

13

- INTRO TO TENNIS (18+) BEGINNERS ONLY @ MOON PARK TENNIS COURTS; 1350 EWING RD, MOON
This is a free tennis clinic for anyone 18 and older who has little to no experience playing tennis. Beginner level only. Certified professionals will teach each session focusing on skill development. Please register in advance.

AUGUST

17

- LUNGTIME CONCERT @ ROBIN HILL PARK GAZEBO; 949 THORN RUN RD, MOON TWP, PA
The MoJo Makers play summer-fun, easy listening music, Jimmy Buffet, The Drifters, Otis Redding, etc.

AUGUST

19

- MOVIES IN THE MOONLIGHT @ MOON PARK AMPHITHEATRE; 1350 EWING RD, MOON
Encanto (PG) will start playing at 8:15pm - Meet & Greet with Mirabel & Isabela from 7:15-8:15PM!
August 26th Sing 2 (PG) will play beginning at 8pm - Face Painting from 7:00-9:00PM!

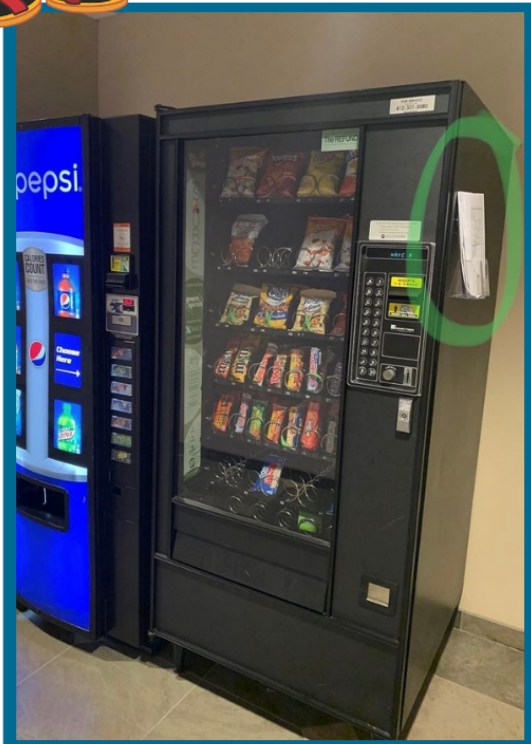
Kona Ice

WE HOPE EVERYONE HAS BEEN HAVING THEIR BEST SUMMER YET... TO CONTINUE THE FUN, CBRE MANAGEMENT TREATED ALL OUR BUILDINGS TO SWEET COLD TREATS FROM KONA ICE!



Vending Refunds

HAVE YOU NOTICED THESE SLIPS IN YOUR BUILDING'S VENDING AREA? THEY ARE VENDING REFUND REQUESTS FORMS. IF YOU DON'T RECEIVE THE PRODUCT, MONIES ARE NOT RETURNED OR INCORRECT, PRODUCT IS DAMAGED, ETC. FROM THE VENDING MACHINE, FILL OUT A SLIP AND LEAVE IT IN THE HOLDER FOR OUR VENDOR TO TAKE CARE OF AT THEIR NEXT REFILL. AS ALWAYS, YOU CAN CONTACT OUR OFFICE AT 412-921-8500 OR EMAIL BROOKE.MALLOY@CBRE WITH QUESTIONS OR CONCERNS. HAPPY SNACKING!



Fuel for the future



CBRE IS AN ACTIVE RECYCLER WITH PARTNERS AT WASTE MANAGEMENT. OUR PARK WIDE RECYCLING PROGRAM ALLOWS PLASTIC BOTTLES (NARROW NECK CONTAINERS LABELED #1 OR #2), FOOD & BEVERAGE CANS (STEEL, TIN & ALUMINUM SODA, VEGETABLE, FRUIT & TUNA CANS), PAPER (BROWN PAPER BAGS, NON-CONFIDENTIAL OFFICE PAPER, NEWSPAPER, & MAGAZINES), AS WELL AS FLATTENED CARDBOARD & PAPERBOARD.

SO FAR IN 2022, CHERRINGTON HAS RECYCLED 19.5 TONS OF MATERIAL!



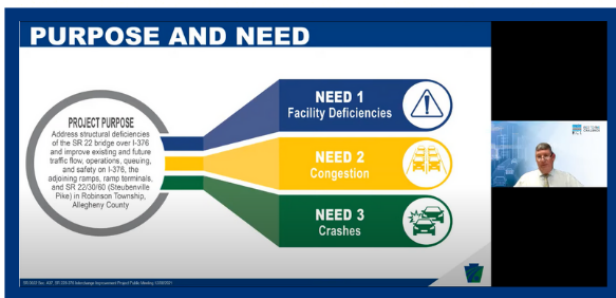
Tenant Spotlight

Learn more about KCI projects in Links section on page 5.

KCI IS A 100% EMPLOYEE-OWNED ENGINEERING, PLANNING & CONSTRUCTION FIRM SERVING CLIENTS THROUGHOUT THE UNITED STATES. OUR MULTI-DISCIPLINED SERVICE OFFERINGS ALLOW US TO PROVIDE EXCEPTIONAL TURNKEY EXPERTISE TO FEDERAL, STATE, & LOCAL GOVERNMENT AGENCIES, AS WELL AS INSTITUTIONAL & PRIVATE-SECTOR CLIENTS. KCI TECHNOLOGIES IS A FIRM WITH OVER 3,000 EMPLOYEES WITH 70 OFFICES IN THE US. KCI BEGAN LEASING BLDG. 200 SUITE 110 IN 2016 WHICH WE SUBSEQUENTLY GREW OUT OF & MOVED TO OUR CURRENT LOCATION AT BLDG. 500 SUITE 210.

KCI PITTSBURGH OFFICE IS PRIMARILY FOCUSED ON ENGINEERING DESIGN & CONSTRUCTION FOR BRIDGE & ROADWAY PROJECTS. WE ALSO OFFER SUBSURFACE UTILITY ENGINEERING & UTILITY COORDINATION. OUR CURRENT CLIENTS INCLUDE PENNDOT, PENNSYLVANIA TURNPIKE COMMISSION, ALLEGHENY COUNTY, CRANBERRY TOWNSHIP, CITY OF PITTSBURGH, & PORT AUTHORITY OF ALLEGHENY COUNTY.

SOME OF KCI'S LOCAL PROJECTS INCLUDE COMPLETING THE DESIGN FOR THE CONSTRUCTION OF FREEDOM ROAD IN BUTLER & BEAVER COUNTIES AS WELL AS COMPLETING THE UTILITY DESIGN FOR VERIZON FOR THE EMERGENCY REPLACEMENT OF THE FERN HOLLOW BRIDGE. KCI IS CURRENTLY WORKING ON THE DESIGN OF THE RECONFIGURED INTERCHANGE AT I-376 / 22 AT EXIT 60 ON I-376 IN ROBINSON TOWNSHIP, ALLEGHENY COUNTY. THE PURPOSE OF THE PROJECT IS TO ADDRESS STRUCTURAL DEFICIENCIES OF THE SR 22 BRIDGE OVER I-376 & IMPROVE EXISTING & FUTURE TRAFFIC FLOW, OPERATIONS, QUEUING, & SAFETY ON INTERSTATE 376, THE ADJOINING RAMPS, RAMP TERMINALS, & STATE ROUTES 22/30 (STEUDEVILLE PIKE). CONSTRUCTION TO BEGIN IN 2024.



Screenshot at left from Live Virtual Public Meeting held Wednesday, December 8, 2021 where David Cooper, Eric Martz, Clinton Amey, & Deb Hoover of KCI Technologies discuss & answer questions regarding the Route 22 / I-376 Interchange Project.

Here are a few things that KCI loves about Cherrington...

"Proximity to employee's homes"

"Food Trucks!"



"Office amenities"

"Availability & responsiveness of CBRE staff"

INTERESTED IN BEING FEATURED AS CHERRINGTON'S NEXT TENANT SPOTLIGHT?

CONTACT BROOKE AT BROOKE.MALLOY@CBRE.COM OR 412-921-8500 FOR MORE INFORMATION!

C3 Amenity Center

SWITCH UP THE SCENERY & HOST YOUR MEETING IN THE AMENITY CENTER! OUR ROOMS ARE EQUIPPED WITH WIFI, SMART/APPLE TVS, POLYCOM TELEPHONE, PROJECTOR WITH HDMI, WHITEBOARD WALLS, & PLENTY OF COMFY SEATING ALL WHILE CONVENIENTLY CLOSE TO OUR MARKET C CAFE & OUTDOOR PATIO.



Meeting rooms can be booked online through the tenant request portal at www.cbrentenantrequests.com.



Frequently Asked Questions



Q: CAN I RENT A MEETING ROOM AFTER NORMAL BUILDING HOURS?

A: Yes. After-hours rentals need prior approval. Contact management at 412-921-8500 or email brooke.malloy@cbre.com to continue with booking.

Q: DOES MY RESERVATION INCLUDE PRIVATE ACCESS TO THE TENANT LOUNGE?

A: Yes. Our lounge is meant to act as a breakout room for guests during long meetings.

Q: WHAT ARE THE RATES FOR RENTING A MEETING ROOM?

A: Rates across meetings rooms can vary. See room rates online through the tenant requests portal.

Q: I DON'T HAVE ACCESS TO THE TENANT PORTAL! WHAT DO I DO?

A: Contact management at 412-921-8500 or email brooke.malloy@cbre.com with your name, telephone number, & email to create an account.

Q: HOW DO I GAIN ACCESS TO THE FITNESS CENTER?

A: Appropriate paperwork must be reviewed & returned before access into the Fitness Center is granted. Please contact Brittany at brittany.zahn@cbre.com for forms.



Click [HERE](#) to have our monthly newsletter sent directly to your email.

Notes from Management

MAINTENANCE REQUESTS

AT CHERRINGTON CORPORATE CENTER, WE UTILIZE AN ONLINE WORK ORDER SYSTEM. CBRE TENANT SERVICES SYSTEM PROVIDES A USER-FRIENDLY SYSTEM THAT ENSURES YOUR SERVICE REQUEST IS PROCESSED & ENABLES YOU TO TRACK THE STATUS OF THE REQUEST TO ITS COMPLETION. YOUR USE OF CBRE TENANT SERVICES SYSTEM WILL ALSO HELP US ADDRESS YOUR REQUESTS MORE EFFICIENTLY. WE ENCOURAGE YOU TO USE THIS SYSTEM TO PLACE NON-EMERGENCY REQUESTS. ONCE YOUR WORK ORDER HAS BEEN COMPLETED, CLICK "RATE OUR SERVICE" IN YOUR EMAIL TO LET US KNOW IF WE MISSED SOMETHING, NEED TO COME BACK OR WANT TO TELL US HOW WE'RE DOING.
RRPITTSBURGH.COM

DESIGNATED SMOKING AREAS

PLEASE BE REMINDED THAT ALL ENTRANCES ARE NON-SMOKING AND SMOKING INSIDE THE BUILDING IS STRICTLY PROHIBITED, INCLUDING THE USE OF ELECTRONIC DEVICES. THERE ARE DESIGNATED SMOKING AREAS AT EACH BUILDING. SMOKING IS NOT PERMITTED ANYWHERE OTHER THAN THIS LOCATION. PLEASE DISPOSE OF YOUR CIGARETTE BUTTS IN THE PROPER RECEPTACLES TO ELIMINATE POTENTIAL FIRE RISKS, LITTER AND ADDED CLEANING EXPENSE.

RECYCLING

CHERRINGTON OFFERS A RECYCLING PROGRAM THAT ACCEPTS THE FOLLOWING ITEMS: PLASTIC BOTTLES & CONTAINERS, FOOD & BEVERAGE CANS, PAPER, & FLATTENED CARDBOARD. IT IS REQUIRED THAT ALL TENANTS BREAK DOWN ANY CARDBOARD BOXES PRIOR TO DISPOSING. THE JANITORIAL STAFF HAS BEEN INSTRUCTED TO NOT DISPOSE OF BOXES THAT HAVE NOT BEEN BROKEN DOWN. THANK YOU FOR YOUR COOPERATION.

DELIVERIES

ALL MAJOR MOVES NEED TO BE SCHEDULED WITH OUR OFFICE AFTER 5:30 PM DURING THE WEEK & ANYTIME SATURDAY & SUNDAY. PLEASE CONTACT THE MANAGEMENT OFFICE PRIOR TO ANY LARGE DELIVERY. PLEASE ALSO REMIND DAILY DELIVERY DRIVERS TO USE LOADING ZONES FOR ANY DELIVERIES.

NOTARY SERVICES

NOTARY SERVICES ARE AVAILABLE AND OFFERED AT NO EXPENSE FOR OUR TENANTS. PLEASE CONTACT CARMEN BOCHICCHIO AT 412.921.8500 OR BY EMAIL AT CARMEN.BOCHICCHIO@CBRE.COM FOR MORE INFORMATION.

LINKS

1. [INTRO TO TENNIS](#)
2. [ROBIN HILL LUNGHTIME CONCERTS](#)
3. [MOVIES IN THE MOONLIGHT](#)
4. [PITTSBURGH RENAISSANCE FESTIVAL](#)
5. [MOON FARMER'S MARKET](#)
6. [MOBILE GHEF](#)
7. [TRUCKIN' TRIANGLES](#)
8. [DOS BROS TACO SHACK](#)
9. [MOON PARKS & REC.](#)
10. [KONA ICE](#)
11. [WASTE MANAGEMENT](#)
12. [KCI TECHNOLOGIES](#)
13. [TENANT PORTAL](#)
14. [NEWSLETTER SIGNUP](#)
15. [RRPITTSBURGH](#)

CBRE Management Team



Carmen R. Bochicchio
General Manager
412.921.8500
carmen.bochicchio@cbre.com



Nicole E. Pilarski
Senior Financial Analyst
412.921.8500
nicole.pilarski@cbre.com



Robert J. Klimczyk
Chief Engineer
412.921.8500
robert.klimczyk@cbre.com



Brittany Zahn
Real Estate Services Coordinator
412.921.8500
brittany.zahn@cbre.com



Brooke Malloy
Meeting & Events Coordinator
412.921.8500
brooke.malloy@cbre.com