

Newsletter



A Look Ahead

- MARCH 1 - MARDI GRAS DAY
- MARCH 3 - NATIONAL COLD CUT DAY
- MARCH 15 - IDES OF MARCH
- MARCH 17 - ST. PATRICK'S DAY
- MARCH 17&18 - NBAA WATCH PARTY
*JOIN US IN THE AMENITY CENTER OF BUILDING 10!
- MARCH 24&25 - NBAA WATCH PARTY
*JOIN US IN THE AMENITY CENTER OF BUILDING 10!



Did you vote in our Instagram poll (@foster_plaza)? The results are in!

Our poll predicted a long winter and we were right!

75%

25%

Spot Cupid!

CUPID WAS SPOTTED FLOATING AROUND THE PARK DURING VALENTINE'S... A HUGE THANK YOU TO ALL OUR LOVELY TENANTS WHO PARTICIPATED.

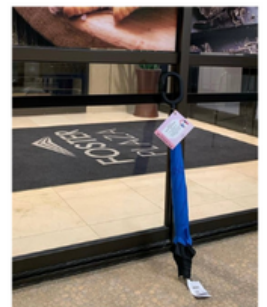
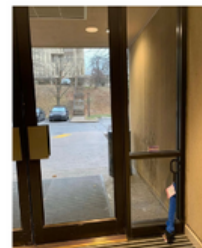
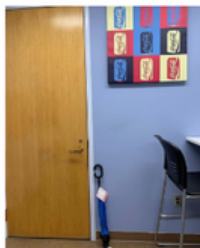


Make Kindness the Norm



WE HELPED #MAKEKINDNESSTHENORM ON FEBRUARY 17 BY PLACING UMBRELLAS AT THE ENTRANCES, IN TENANT LOUNGES, AND COMMON SPACES OF EACH BUILDING. IT WAS A DOWNPOUR THAT DAY AND WE'RE HAPPY WE COULD HELP OUT THOSE IN NEED. DID YOU CLAIM AN UMBRELLA?

EMAIL [BROOKE.MALLOY@CBRE.COM](mailto:brooke.malloy@cbre.com) AND LET US KNOW!



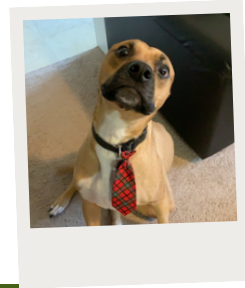


Calling All Pet Parents...

DEADLINE FOR SUBMISSIONS HAS PASSED AND IT'S TIME TO VOTE ON PET BEST SMILE, MOST UNIQUE, OUTSTANDING OUTFIT, AND SUPREME SNOOZER. PLEASE LIMIT VOTES TO ONE PER CATEGORY.

CLICK *HERE* FOR LINK TO POLLS.

BEST OF LUCK TO ALL OUR FURRY FRIENDS!



March Madness

GET IN ON THE EXCITEMENT OF THIS YEAR'S NCAA MEN'S BASKETBALL TOURNAMENT & JOIN OUR FOSTER PLAZA MARCH MADNESS POOL!

Questions?
Contact Brooke Malloy or
Brittany Zahn
412-921-8500

GROUP RULES:

1. ONE ENTRY PER PERSON.
2. ENTRIES ARE DUE BY 3/17 AT 12PM EST.
3. MUST SHOW PROOF OF BEING A FOSTER PLAZA TENANT TO WIN A PRIZE.
4. PLEASE NAME YOUR BRACKET USING THE FOLLOWING FORMAT: FIRSTNAMELASTNAME_COMPANY

Here's how to enter:

1. [CLICK HERE](#) to go to our Bracket Homepage.
2. You must login or create a free account at ESPN.com to play.
3. Once your account is created, choose an ESPN name.
4. After choosing account name, create your bracket using the following naming format: FirstnameLastname_Company
5. You have the options to join groups or invite coworkers, but both are optional.
6. Fill out bracket picks & wait for games to begin!

Group Password: Fosterfreethrows



Join us for a watch party on March 17/18 & 24/25 in the Amenity Center!



Contact brooke.malloy@cbre.com or click [HERE](#) to have our monthly newsletter sent directly to your email.

Tenant Spotlight!



KÖRBER

"We have really enjoyed a professional working environment in Foster Plaza for the past 8 years. The CBRE team treat all of our employees with respect and have always been responsive to our needs. We experienced firsthand the now-famous Foster 7 fire. CBRE contacted us immediately and we were in position to quickly mobilize to another building.

During this challenging time, CBRE handled the rebuilding in minimal time was able to return. Our office has enjoyed over the years the many happy hours, parties, the games inside and outside during the summer. It is a great way to meet other tenants and find some common ground to communicate outside of work.

This past year moved from Foster 7 to our new home in 10 with help from CBRE. I am thrilled with the layout, modernization and style of our new office and we are in a great position for our employees to return to the office in a comfortable new setting.

Special thanks to Jennifer Pavlik from DLA Architecture, Bob Schultz from Koffler Building Co, Carmen Bochicchio and the entire CBRE team!"

- Matthew Deep



I've been working for Wexford Health Sources, Inc. a little over five years now and I can say that every day here is a new adventure! I love my job and all my work colleagues.

I, myself along with the other employees here, like the convenient location of Foster Plaza along with all the amenities that include, the walking paths around the plaza, Foster Café, Scoglio's and of course how well we are treated by the staff.

Anytime I have an issue with something in our building, the staff are right on top of it for us. It's much appreciated and hope we are here for another 15 years!

- Dawn Guiney

BD&E

Once again...It's raining awards over at BD&E!

For the ninth consecutive year, BD&E was a top award winner in the National Education Digital Marketing Awards. This year their all-star team won five gold and two silver awards for work produced for college, university, and secondary school clients across three different states.

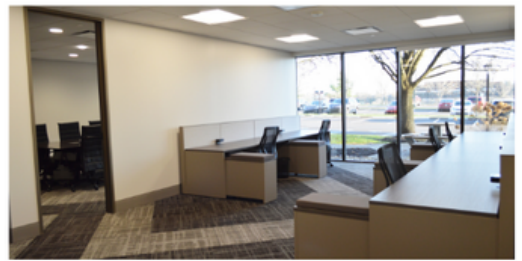
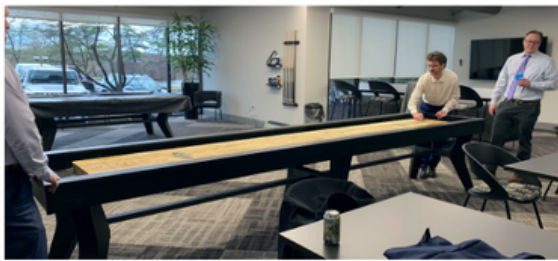
Headquartered in Foster Plaza 6, BD&E is a strategic branding and marketing communications firm working with corporate and institutional clients located in Pittsburgh and across the country. For more information about how they may be able to assist your company, visit www.bdeusa.com.

- Erin Kartman



Foster Plaza Amenities

NEED A QUIET PLACE TO TAKE A CALL? CHANGE OF SCENERY FOR LUNCH? SOME TIME AWAY FROM YOUR OFFICE? THE AMENITY CENTER IN BUILDING 10 IS FOR YOU! WE HAVE WORKSTATIONS EQUIPPED WITH OUTLETS & STORAGE, TENANT LOUNGE WITH GAMES & TVS, AS WELL AS MEETING ROOMS FOR YOUR EVERY NEED.



Frequently Asked Questions

Q: CAN WE RENT A SPACE AFTER NORMAL BUILDING HOURS?

A: YES. PLEASE REACH OUT TO THE OFFICE AT 412-921-8500 OR EMAIL BROOKE.MALLOY@CBRE.COM TO CONTINUE WITH BOOKING.

Q: DOES OUR RESERVATION INCLUDE PRIVATE ACCESS TO THE LOUNGE & CENTRAL STATION?

A: NO. THE LOUNGE & CENTRAL STATION ARE OPEN TO ALL TENANTS NO MATTER THE OCCASION.

Q: WHAT ARE THE RATES FOR RENTING A MEETING ROOM?

A: RATES ARE AVAILABLE THROUGH THE TENANT REQUEST PORTAL.

Contact our office at 412-921-8500 or email brooke.malloy@cbre.com if you are not set up to access the tenant request portal at www.cbrentenantrequests.com.

Notes from Management

MAINTENANCE REQUESTS

AT FOSTER PLAZA, WE UTILIZE AN ONLINE WORK ORDER SYSTEM. CBRE TENANT SERVICES SYSTEM HAS PROVEN TO BE A GREAT BENEFIT PROVIDES A USER-FRIENDLY SYSTEM THAT ENSURES YOUR SERVICE REQUEST IS PROCESSED AND ENABLES YOU TO TRACK THE STATUS OF THE REQUEST TO ITS COMPLETION. YOUR USE OF CBRE TENANT SERVICES SYSTEM WILL ALSO HELP US ADDRESS YOUR REQUESTS MORE EFFICIENTLY. WE ENCOURAGE YOU TO USE THIS SYSTEM TO PLACE NON-EMERGENCY REQUESTS.

[HTTP://RRPITTSBURGH.COM](http://rrpittsburgh.com).

DESIGNATED SMOKING AREAS

PLEASE BE REMINDED THAT ALL ENTRANCES ARE NON-SMOKING AND SMOKING INSIDE THE BUILDING IS STRICTLY PROHIBITED, INCLUDING THE USE OF ELECTRONIC DEVICES.

THERE ARE DESIGNATED SMOKING AREAS AT EACH BUILDING.

SMOKING IS NOT PERMITTED ANYWHERE OTHER THAN THIS LOCATION.

PLEASE DISPOSE OF YOUR CIGARETTE BUTTS IN THE PROPER RECEPTACLES TO ELIMINATE POTENTIAL FIRE RISKS, LITTER AND ADDED CLEANING EXPENSE.

RECYCLING

FOSTER PLAZA OFFERS A RECYCLING PROGRAM THAT ACCEPTS THE FOLLOWING ITEMS: PLASTIC BOTTLES AND CONTAINERS, FOOD AND BEVERAGE CANS, PAPER, AND FLATTENED CARDBOARD. IT IS REQUIRED THAT ALL TENANTS BREAK DOWN ANY CARDBOARD BOXES PRIOR TO DISPOSING.

THE JANITORIAL STAFF HAS BEEN INSTRUCTED TO NOT DISPOSE OF BOXES THAT HAVE NOT BEEN BROKEN DOWN. THANK YOU FOR YOUR COOPERATION.

DELIVERIES

ALL MAJOR MOVES NEED TO BE SCHEDULED WITH OUR OFFICE AFTER 5:30 PM DURING THE WEEK AND ANYTIME SATURDAY AND SUNDAY. PLEASE CONTACT THE MANAGEMENT OFFICE PRIOR TO ANY LARGE DELIVERY. PLEASE ALSO REMIND DAILY DELIVERY DRIVERS TO USE LOADING ZONES FOR ANY DELIVERIES.

NOTARY SERVICES

NOTARY SERVICES ARE AVAILABLE AND OFFERED AT NO EXPENSE FOR OUR TENANTS.

PLEASE CONTACT CARMEN BOGHICCHIO AT 412.921.8500 OR BY EMAIL AT CARMEN.BOGHICCHIO@CBRE.COM FOR MORE INFORMATION.

CBRE Management Team



Carmen R. Bochicchio
General Manager
412.921.8500
carmen.bochicchio@cbre.com



Nicole E. Pilarski
Senior Financial Analyst
412.921.8500
nicole.pilarski@cbre.com



Robert J. Klimczyk
Chief Engineer
412.921.8500
robert.klimczyk@cbre.com



Brittany Zahn
Real Estate Services Coordinator
412.921.8500
brittany.zahn@cbre.com



Brooke Malloy
Meeting & Events Coordinator
412.921.8500
brooke.malloy@cbre.com